

LEGEND

- FIRE HYDRANT LOCATION
- UTILITY POLE LOCATION
- WETLAND DELINEATION
- SB-PA-01 PRE-DESIGN SOIL BORING
- SSS-PA-21 PRE-DESIGN SURFACE SOIL SAMPLE
- TP-PA-09 PRE-DESIGN TEST PIT
- TS-ND-41 STREAM TRANSECT BORING LOCATION
- GB-PA-02 PRE-DESIGN GEOTECHNICAL BORING
- PZ-PA-24 PRE-DESIGN PIEZOMETER
- W-1 MEAN HIGH WATER (EL. 6.62)
- HISTORIC MONITORING WELLS/ SOIL BORING TO BE MAINTAINED (THERE MAY BE A CLUSTER OF WELLS IN SOME LOCATIONS)
- CHLOROPICRIN TREATMENT AREA
- 2016 SURVEYED AREA BOUNDARY LIMITS

Locations of cross-sections shown on Drawings 6-9

NOTES:
1. SEE DRAWING NO. 2 FOR GENERAL NOTES AND ADDITIONAL LEGEND INFORMATION.



| | | | | |
|-----|------------|--|-----|-----|
| 14 | 2018.01.02 | ADDRESS 2017.12.19 MAINE DEP COMMENTS | JHT | CMG |
| 13 | 2017.12.08 | PHASE 1 EXCAVATION | JHT | CMG |
| 12 | 2017.08.21 | RAILROAD SPUR CLAVERTY OUTLET PROTECTION | JHT | CMG |
| 11 | 2017.05.04 | ADDRESS 2017.04.28 MAINE DEP COMMENTS | JHT | CMG |
| 1 | 2017.04.19 | REVISED TSSA NO. 3 LOCATION | JHT | CMG |
| REV | DATE | DESCRIPTION | JHT | APP |



TITLE: **EXISTING CONDITIONS**

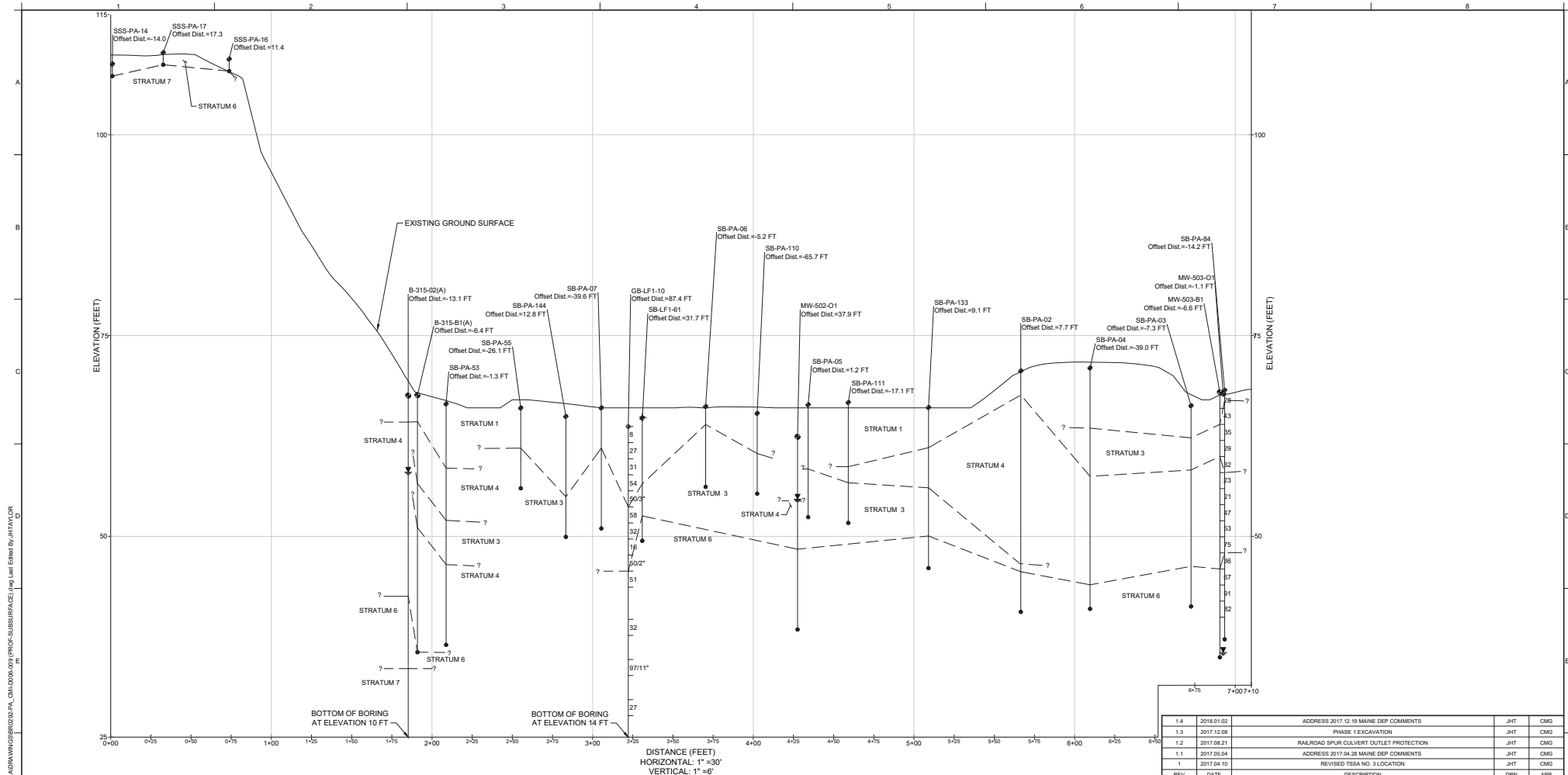
PROJECT: **PLANT AREA CORRECTIVE MEASURES IMPLEMENTATION PLAN - PHASE 1 ORRINGTON REMEDIATION SITE**

SITE: **ORRINGTON, MAINE**

| | | | | |
|--|--------------|-----|--------------|---------------|
| THIS DRAWING MAY NOT BE ISSUED FOR PROJECT TENDER OR CONSTRUCTION UNLESS SEALED. | DESIGN BY: | JHG | DATE: | FEBRUARY 2017 |
| | DRAWN BY: | JHT | PROJECT NO.: | BR0292 |
| | CHECKED BY: | RES | FILE: | |
| | REVIEWED BY: | CMG | DRAWING NO.: | |
| | APPROVED BY: | SML | 4 | OF 40 |

DRAFT CMI PLAN REV 1.4

SCALE IS BASED ON 22" X 34" NON-REDUCED SHEET SIZE (BORDER = 21" X 32")

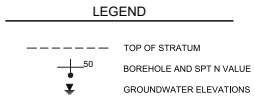


T:\Projects\CADD\ORRINGTON\ORRINGTON.ME Remediation\DESIGN\PLANT AREA\DRAWINGS\GENERAL\CALCULATIONS\PROF.SUBSURFACE.dwg User: JHT Date: 02/14/17

A
4
DETAIL
SECTION A

NOTES:

- SEE DRAWING NO. 2 FOR GENERAL NOTES AND ADDITIONAL LEGEND INFORMATION.
- STRATUM DEFINITIONS:
 STRATUM 1 = FILL
 STRATUM 2 = PEAT/ORGANICS LAYER
 STRATUM 3 = CLAY AND SILT LAYERS
 STRATUM 4 = SAND LAYER
 STRATUM 5 = GRAVEL LAYER
 STRATUM 6 = TILL LAYER
 STRATUM 7 = BEDROCK
- TOP OF STRATUM ELEVATIONS BELOW GROUND SURFACE SHOWN ARE APPROXIMATE, AND BASED ON THE ELEVATIONS RECORDED ON THE BORING LOGS. PROFILES ARE BASED ON LINEAR INTERPOLATION BETWEEN DATA POINTS; SUBSURFACE CONDITIONS CAN CHANGE BETWEEN POINTS.
- GROUNDWATER ELEVATIONS SHOWN WERE ESTIMATED USING INFORMATION FROM 2012 GROUNDWATER MONITORING WELL MEASUREMENTS BY SEEVE & MAHER, AND TEMPORARY PIEZOMETER MEASUREMENTS BETWEEN JULY 24, 2015 AND SEPTEMBER 15, 2016 BY GEOSYNTEC. GROUNDWATER ELEVATIONS OFTEN FLUCTUATE BASED ON SEASONAL AND CLIMATE CONDITIONS. REMEDIATION CONTRACTOR SHALL CONFIRM GROUNDWATER LEVELS PRIOR TO BEGINNING WORK.
- SPT N VALUE IS THE NUMBER OF BLOWS WITH A 140 LB HAMMER PER 12 INCHES OF PENETRATION.



SCALE IS BASED ON 22" X 34" NON-REDUCED SHEET SIZE (BORDER = 21" X 32")

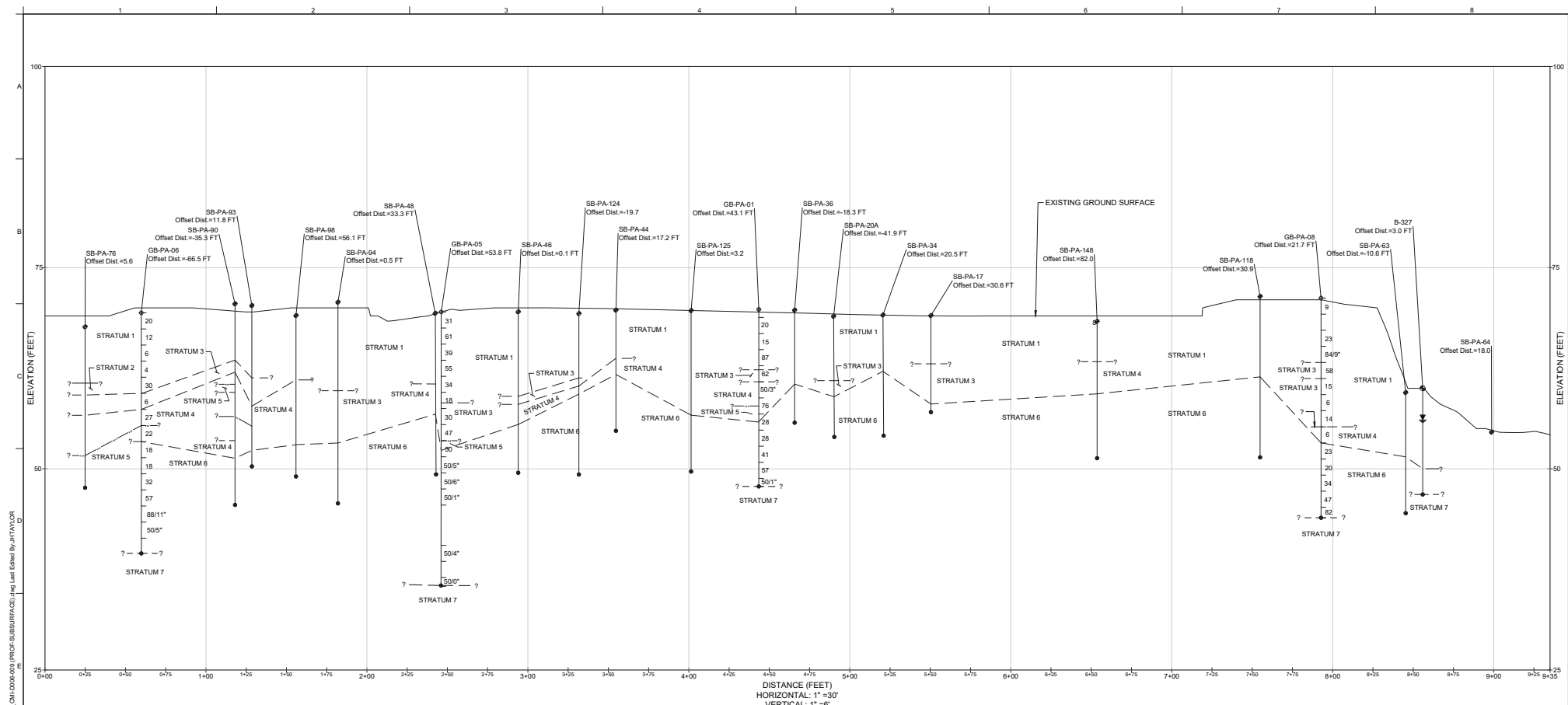
| | | | | |
|-----|------------|---|-----|-----|
| 1.4 | 2018.01.02 | ADDRESS 2017.12.19 MAINE DEP COMMENTS | JHT | CMG |
| 1.3 | 2017.12.08 | PHASE 1 EXCAVATION | JHT | CMG |
| 1.2 | 2017.08.21 | RAILROAD SPUR CULVERT OUTLET PROTECTION | JHT | CMG |
| 1.1 | 2017.05.04 | ADDRESS 2017.04.28 MAINE DEP COMMENTS | JHT | CMG |
| 1 | 2017.04.10 | REVISED TSSA NO. 3 LOCATION | JHT | CMG |
| REV | DATE | DESCRIPTION | JHT | APP |



TITLE: SUBSURFACE PROFILES - SHEET 1
 PROJECT: PLANT AREA CORRECTIVE MEASURES IMPLEMENTATION PLAN - PHASE 1 ORRINGTON REMEDIATION SITE
 SITE: ORRINGTON, MAINE

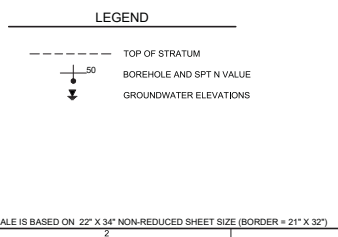
| | | |
|--|------------------|---------------------|
| THIS DRAWING MAY NOT BE ISSUED FOR PROJECT TENDER OR CONSTRUCTION UNLESS SEALED. | DESIGN BY: JHG | DATE: FEBRUARY 2017 |
| | DRAWN BY: JHT | PROJECT NO.: BR0292 |
| | CHECKED BY: RES | FILE: |
| | REVIEWED BY: CMG | DRAWING NO.: |
| | APPROVED BY: SML | 6 OF 40 |

DRAFT CMI PLAN REV 1.4



B SECTION
4 SECTION B

- NOTES:
- SEE DRAWING NO. 2 FOR GENERAL NOTES AND ADDITIONAL LEGEND INFORMATION.
 - STRATUM DEFINITIONS:
STRATUM 1 = FILL
STRATUM 2 = PEAT/ORGANICS LAYER
STRATUM 3 = CLAY AND SILT LAYERS
STRATUM 4 = SAND LAYER
STRATUM 5 = GRAVEL LAYER
STRATUM 6 = TILL LAYER
STRATUM 7 = BEDROCK
 - TOP OF STRATUM ELEVATIONS BELOW GROUND SURFACE SHOWN ARE APPROXIMATE, AND BASED ON THE ELEVATIONS RECORDED ON THE BORING LOGS. PROFILES ARE BASED ON LINEAR INTERPOLATION BETWEEN DATA POINTS; SUBSURFACE CONDITIONS CAN CHANGE BETWEEN POINTS.
 - GROUNDWATER ELEVATIONS SHOWN WERE ESTIMATED USING INFORMATION FROM 2012 GROUNDWATER MONITORING WELL MEASUREMENTS BY SEEVE & MAHER, AND TEMPORARY PIEZOMETER MEASUREMENTS BETWEEN JULY 24, 2015 AND SEPTEMBER 15, 2016 BY GEOSYNTEC. GROUNDWATER ELEVATIONS OFTEN FLUCTUATE BASED ON SEASONAL AND CLIMATE CONDITIONS. REMEDIATION CONTRACTOR SHALL CONFIRM GROUNDWATER LEVELS PRIOR TO BEGINNING WORK.
 - SPT N VALUE IS THE NUMBER OF BLOWS WITH A 140 LB HAMMER PER 12 INCHES OF PENETRATION.



| | | | | |
|-----|------------|---|-----|-----|
| 1.4 | 2018.01.02 | ADDRESS 2017.12.19 MAINE DEP COMMENTS | JHT | CMG |
| 1.3 | 2017.12.08 | PHASE 1 EXCAVATION | JHT | CMG |
| 1.2 | 2017.08.21 | RAILROAD SPUR CULVERT OUTLET PROTECTION | JHT | CMG |
| 1.1 | 2017.05.04 | ADDRESS 2017.04.28 MAINE DEP COMMENTS | JHT | CMG |
| 1 | 2017.04.19 | REVISED TBSA NO. 3 LOCATION | JHT | CMG |
| REV | DATE | DESCRIPTION | JHT | APP |

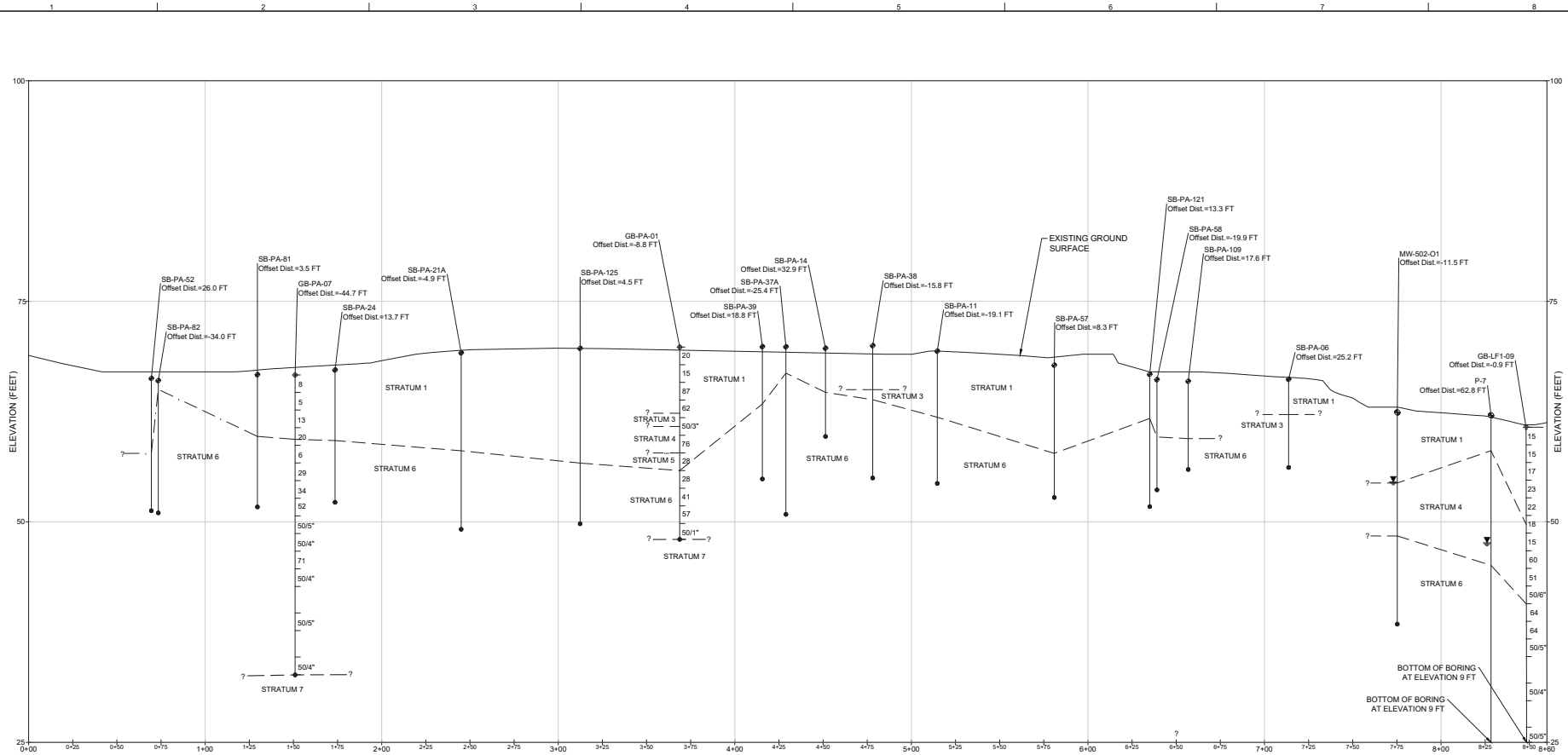


TITLE: SUBSURFACE PROFILES - SHEET 2
 PROJECT: PLANT AREA CORRECTIVE MEASURES IMPLEMENTATION PLAN - PHASE 1 ORRINGTON REMEDIATION SITE
 SITE: ORRINGTON, MAINE

| | | |
|---|------------------|---------------------|
| THIS DRAWING MAY NOT BE ISSUED FOR PROJECT TENDER OR CONSTRUCTION UNLESS SEALED. SIGNATURE _____ DATE _____ | DESIGNED BY: JHG | DATE: FEBRUARY 2017 |
| | DRAWN BY: JHT | PROJECT NO.: BR0292 |
| | CHECKED BY: RES | FILE: |
| | REVIEWED BY: CMG | DRAWING NO.: |
| | APPROVED BY: SML | 7 OF 40 |

DRAFT CMI PLAN REV 1.4

T:\Projects\CADD\ORRINGTON\ORRINGTON.ME Remediation\DESIGN\PLAN AREA\DRAWINGS\GEOTECH\CALCULATIONS\PROF-SUBSURFACE.dwg Last Edited By: JHTaylor



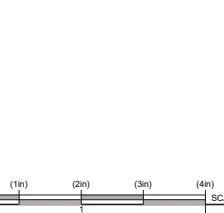
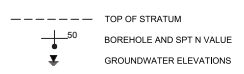
DISTANCE (FEET)
HORIZONTAL: 1"=30'
VERTICAL: 1"=6'

(C) SECTION
4 SECTION C

NOTES:

1. SEE DRAWING NO. 2 FOR GENERAL NOTES AND ADDITIONAL LEGEND.
2. STRATUM DEFINITIONS:
 STRATUM 1 = FILL
 STRATUM 2 = PEAT/ORGANICS LAYER
 STRATUM 3 = CLAY AND SILT LAYERS
 STRATUM 4 = SAND LAYER
 STRATUM 5 = GRAVEL LAYER
 STRATUM 6 = TILL LAYER
 STRATUM 7 = BEDROCK
3. TOP OF STRATUM ELEVATIONS BELOW GROUND SURFACE SHOWN ARE APPROXIMATE, AND BASED ON THE ELEVATIONS RECORDED ON THE BORING LOGS. PROFILES ARE BASED ON LINEAR INTERPOLATION BETWEEN DATA POINTS; SUBSURFACE CONDITIONS CAN CHANGE BETWEEN POINTS.
4. GROUNDWATER ELEVATIONS SHOWN WERE ESTIMATED USING INFORMATION FROM 2012 GROUNDWATER MONITORING WELL MEASUREMENTS BY SEEVE & MAHER, AND TEMPORARY PIEZOMETER MEASUREMENTS BETWEEN JULY 24, 2015 AND SEPTEMBER 15, 2016 BY GEOSYNTEC. GROUNDWATER ELEVATIONS OFTEN FLUCTUATE BASED ON SEASONAL AND CLIMATE CONDITIONS. REMEDIATION CONTRACTOR SHALL CONFIRM GROUNDWATER LEVELS PRIOR TO BEGINNING WORK.
5. SPT N VALUE IS THE NUMBER OF BLOWS WITH A 140 LB HAMMER PER 12 INCHES OF PENETRATION.

LEGEND



| | | | | |
|-----|------------|---|-----|-----|
| 1.4 | 2018.01.02 | ADDRESS 2017.12.19 MAINE DEP COMMENTS | JHT | CMG |
| 1.3 | 2017.12.08 | PHASE 1 EXCAVATION | JHT | CMG |
| 1.2 | 2017.08.21 | RAILROAD SPUR CULVERT OUTLET PROTECTION | JHT | CMG |
| 1.1 | 2017.05.04 | ADDRESS 2017.04.28 MAINE DEP COMMENTS | JHT | CMG |
| 1 | 2017.04.10 | REVISED TBSA NO. 3 LOCATION | JHT | CMG |
| REV | DATE | DESCRIPTION | JHT | APP |



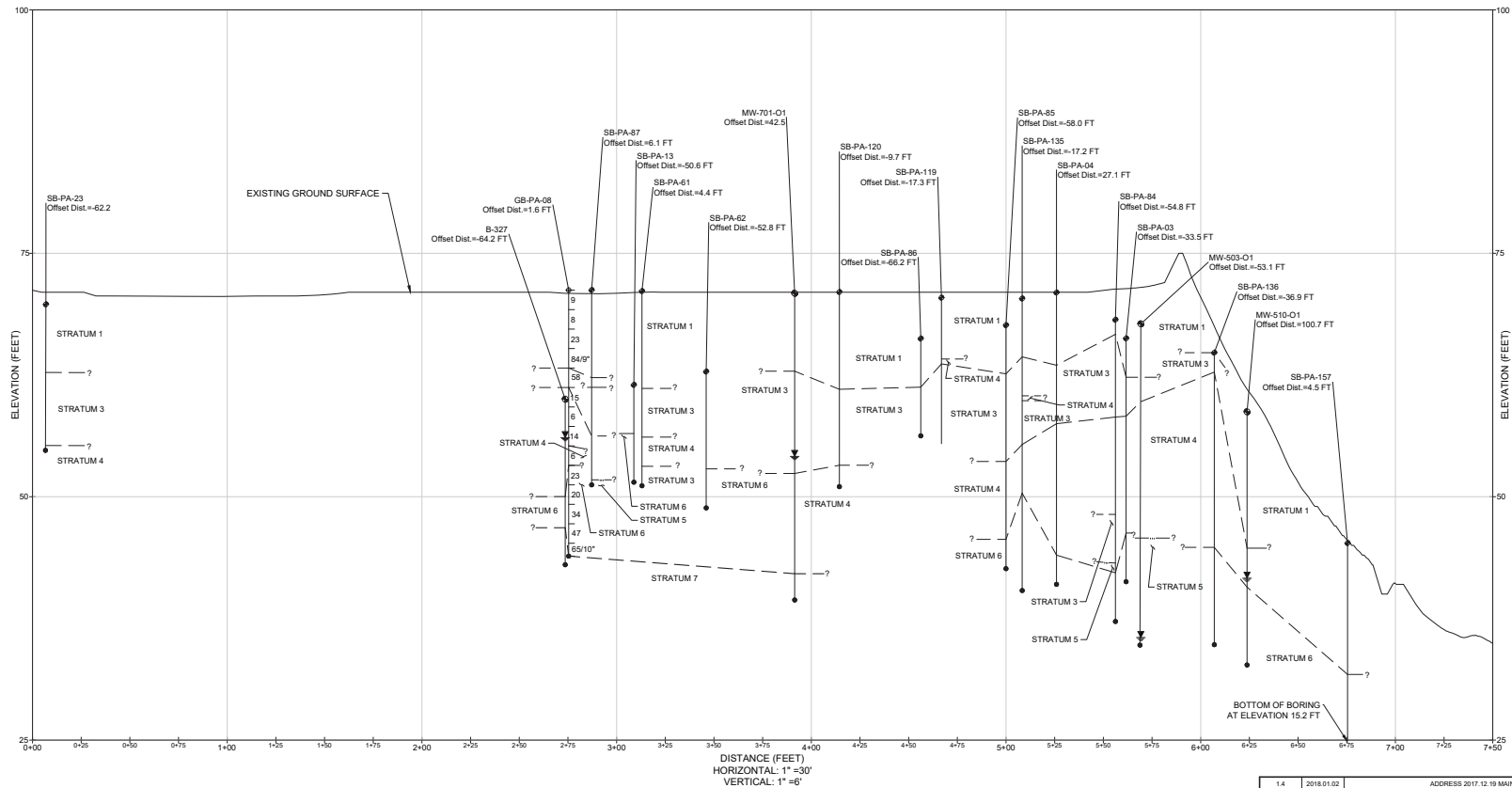
TITLE: SUBSURFACE PROFILES - SHEET 3

PROJECT: PLANT AREA CORRECTIVE MEASURES IMPLEMENTATION PLAN - PHASE 1 ORRINGTON REMEDIATION SITE

SITE: ORRINGTON, MAINE

| | | |
|---|------------------|----------------------|
| THIS DRAWING MAY NOT BE ISSUED FOR PROJECT TENDER OR CONSTRUCTION UNLESS SEALED. SIGNATURE _____ DATE _____ | DESIGN BY: JHG | DATE: FEBRUARY 2017 |
| | DRAWN BY: JHT | PROJECT NO.: BR0292 |
| | CHECKED BY: RES | FILE: |
| | REVIEWED BY: CMG | DRAWING NO.: 8 OF 40 |
| | APPROVED BY: SML | |

DRAFT CMI PLAN REV 1.4



D SECTION
4 SECTION D

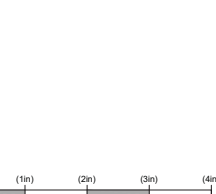
NOTES:

1. SEE DRAWING NO. 2 FOR GENERAL NOTES AND ADDITIONAL LEGEND.
2. STRATUM DEFINITIONS:
 STRATUM 1 = FILL
 STRATUM 2 = PEAT/ORGANICS LAYER
 STRATUM 3 = CLAY AND SILT LAYERS
 STRATUM 4 = SAND LAYER
 STRATUM 5 = GRAVEL LAYER
 STRATUM 6 = TILL LAYER
 STRATUM 7 = BEDROCK
3. TOP OF STRATUM ELEVATIONS BELOW GROUND SURFACE SHOWN ARE APPROXIMATE, AND BASED ON THE ELEVATIONS RECORDED ON THE BORING LOGS. PROFILES ARE BASED ON LINEAR INTERPOLATION BETWEEN DATA POINTS; SUBSURFACE CONDITIONS CAN CHANGE BETWEEN POINTS.
4. GROUNDWATER ELEVATIONS SHOWN WERE ESTIMATED USING INFORMATION FROM 2012 GROUNDWATER MONITORING WELL MEASUREMENTS BY SEEVE & MAHER, AND TEMPORARY PIEZOMETER MEASUREMENTS BETWEEN JULY 24, 2015 AND SEPTEMBER 15, 2016 BY GEOSYNTEC. GROUNDWATER ELEVATIONS OFTEN FLUCTUATE BASED ON SEASONAL AND CLIMATE CONDITIONS. REMEDIATION CONTRACTOR SHALL CONFIRM GROUNDWATER LEVELS PRIOR TO BEGINNING WORK.
5. SPT N VALUE IS THE NUMBER OF BLOWS WITH A 140 LB HAMMER PER 12 INCHES OF PENETRATION.

LEGEND

- TOP OF STRATUM
- BOREHOLE AND SPT N VALUE
- GROUNDWATER ELEVATIONS

T:\Projects\CADD\ORRINGTON\ORRINGTON\ME Remediation\DESIGN\PLANT AREA\DRAWINGS\GEOTECH\PA_CALCULATIONS\PROF.SUBSURFACE.dwg Last Edited By: JHTAYLOR



DRAFT CMI PLAN REV 1.4

| | | | | |
|-----|------------|---|-----|-----|
| 14 | 2018.01.02 | ADDRESS 2017.12.19 MAINE DEP COMMENTS | JHT | CMG |
| 13 | 2017.12.08 | PHASE 1 EXCAVATION | JHT | CMG |
| 12 | 2017.08.21 | RAILROAD SPUR CULVERT OUTLET PROTECTION | JHT | CMG |
| 11 | 2017.05.04 | ADDRESS 2017.04.28 MAINE DEP COMMENTS | JHT | CMG |
| 1 | 2017.04.19 | REVISED TSSA NO. 3 LOCATION | JHT | CMG |
| REV | DATE | DESCRIPTION | DRN | APP |



TITLE: SUBSURFACE PROFILES - SHEET 4

PROJECT: PLANT AREA CORRECTIVE MEASURES IMPLEMENTATION PLAN - PHASE 1 ORRINGTON REMEDIATION SITE

SITE: ORRINGTON, MAINE

DESIGN BY: JHG DATE: FEBRUARY 2017

DRAWN BY: JHT PROJECT NO.: BR0292

CHECKED BY: RES FILE:

REVIEWED BY: CMG DRAWING NO.:

APPROVED BY: SML 9 OF 40

SIGNATURE DATE